

THE HOSPITAL WORLD.

GROYDON GENERAL HOSPITAL.

ST. LUKE'S DAY.

For some time now St. Luke's Day has been observed in Croydon General Hospital as a day of special remembrance for the work of the Hospital and for all those who are engaged in it.

This year the day began with a Celebration of Holy Communion at 6.30 a.m. which was held in the little Chapel. A number of Sisters and Nurses were very glad to be able to go to this early service.

At 4 p.m. there was the annual informal tea in Matron's sitting room, to which the Bishop of Croydon, the Chairman, and most of the Honorary Medical Staff and their wives and the House Staff came and made a very friendly party.

This was followed by a short, simple service taken by the Bishop in the Hospital Chapel. This service has become an event to which everyone looks forward, and the helpful talks given by the Bishop on these occasions are much appreciated. One wonders where he gets so large an understanding of the joys and difficulties of Hospital work.

The Chapel was crowded to its utmost limit this year, and as many of the medical, nursing and domestic staff who could be spared were present at this service.

On Sunday, October 23rd, the Medical and Nursing staffs of all the local Hospitals and Institutions attended special Evensong at the Parish Church—a Service which is always much appreciated by all who can attend.

THE WORCESTER INFIRMARY.

On October 28th, the Prince of Wales flew to Worcester, where he had an enthusiastic welcome, to open the reconstructed bridge and some extensions to the Infirmary.

The additions to the Infirmary buildings include a new nurses' home, two operating theatres, an orthopaedic block, and a pathological laboratory. These have cost £60,000, and are part of a large scheme which is to cost £90,000. When the Prince visited the Infirmary to receive cheques and purses, it was announced that Sir William Morris, who was born in Worcester, had given £26,000, and thus the new buildings are free of debt.

The address of the Secretary of the Fever Nurses' Association is now 63, Riddlesdown Road, Purley, Surrey, and no longer 6, Western Road, Romford.

MEMORIAL TO QUEEN ALEXANDRA.

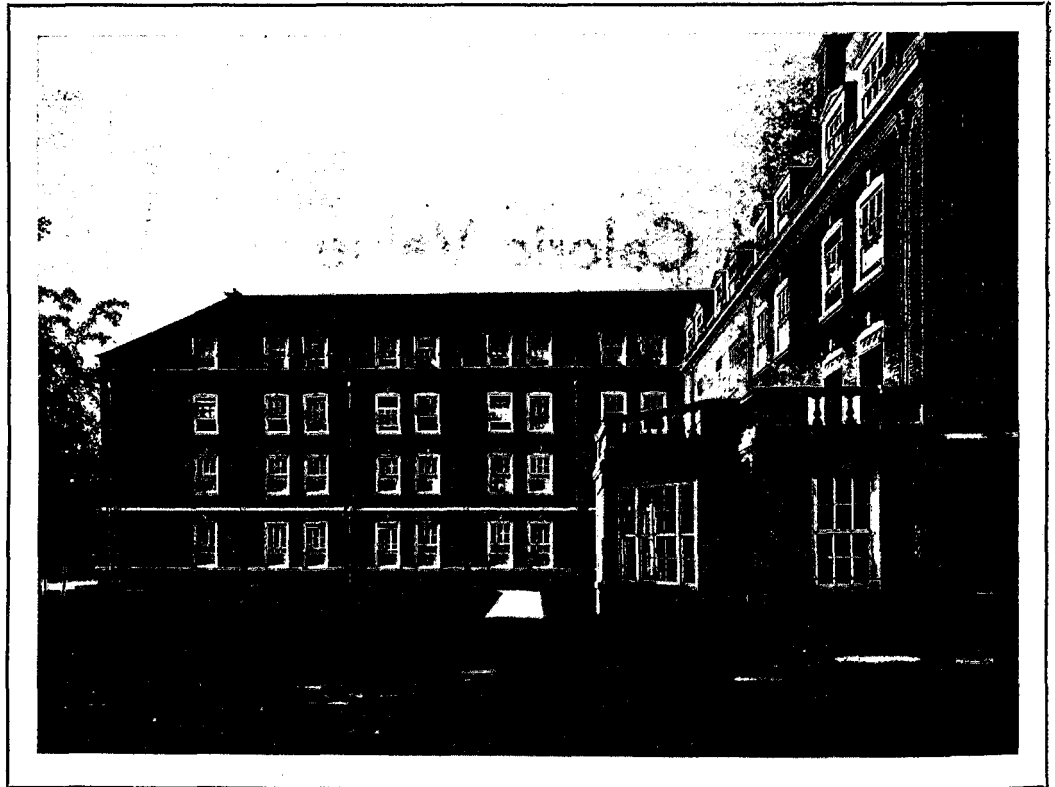
NEW NURSES' HOME OPENED BY THE QUEEN AT THE NORFOLK AND NORWICH HOSPITAL.

Sandringham House, in the county of Norfolk, is the King's own private demesne, and it is here that their Majesties enjoy short spells of home life to which the British people are so deeply attached.

Thus in Norfolk the King and Queen come into intimate touch with the people and take a very personal interest in county activities.

Sandringham has sacred memories as it was greatly beloved by the late Queen Alexandra, who spent her last days there, in close touch with her beloved pets and in the exquisite gardens where still grow the flowers of her taste.

Thus when a new Nurses' Home became necessary in



THE QUEEN ALEXANDRA MEMORIAL NURSES' HOME.
The Norfolk and Norwich Hospital.

connection with the ever extending benevolence of the Norfolk and Norwich Hospital, the Governors were granted the privilege of naming the new building "The Queen Alexandra Memorial Nurses' Home," and on October 15th last, Queen Mary, a Royal Patron of the Hospital, was given a very enthusiastic reception when she visited the ancient city of Norwich to open the new Home, which has thus been brought into close association with the two Royal ladies whose special sympathy and help has always been so generously extended to any appeal on behalf of Nursing and Hospital work.

The Queen fulfilled a series of engagements in Norwich before visiting the Hospital. She visited the Guildhall and then drove to the Cathedral Close, where she planted a cedar tree to the north-east of St. Saviour's War Memorial Chapel. Within a few yards of the tree is the grave of

[previous page](#)

[next page](#)